

Science lesson Opal class week 6

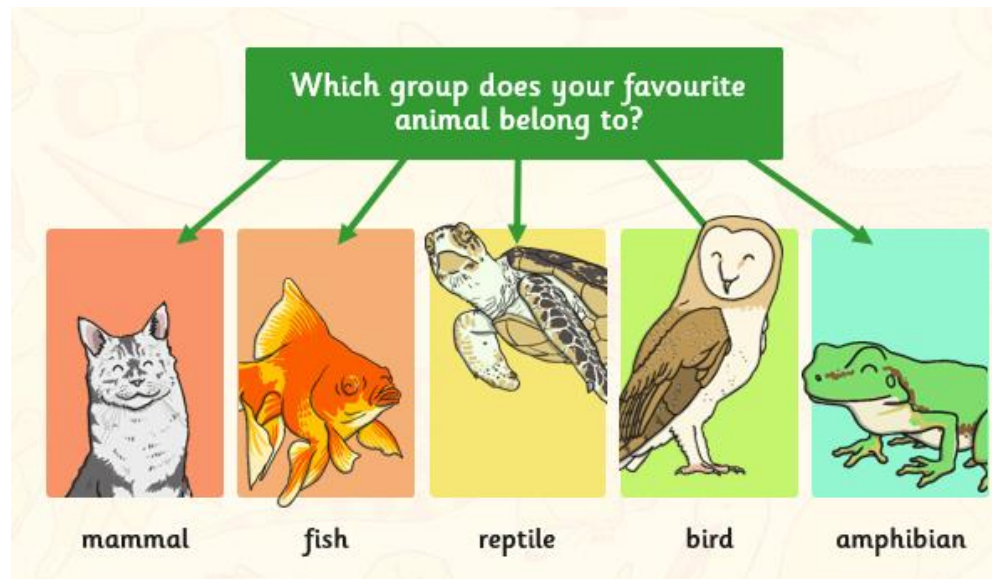
Hello Opal Class,

Thank you very much for handing in all your lovely work.

In today's lesson I would like you to think about how we can group animals

Question:

- How can we identify common groups of animals?



We sort animals in 5-6 different groups based on similarities. The animals in each group have a lot in common based on what they look like, how they produce their young ones, how they move and where they live. The picture on the side shows you five main groups. Have a think which group does your favourite animal belong to?

To help you, have a look at the poster below showing similarities for each animal group. Alternatively check out the clips from the BBC website.

Animal Classification – Cheat Sheet

AMPHIBIANS



REPTILES



FISH



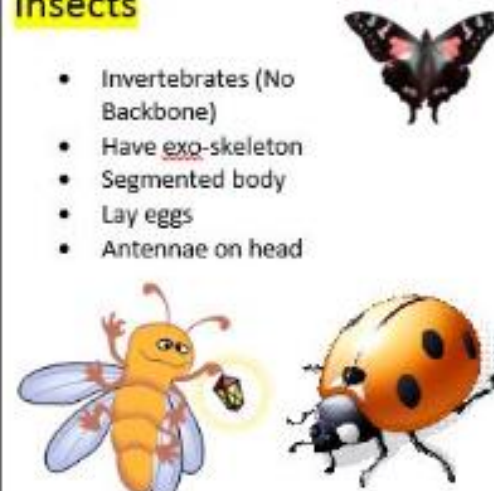
BIRDS



MAMMALS



Insects



BBC bitesize clips about the different animal groups:

[What are mammals? - BBC Bitesize](#)

[What are amphibians? - BBC Bitesize](#)

[What are birds? - BBC Bitesize](#)

[What are fish? - BBC Bitesize](#)

[What are reptiles? - BBC Bitesize](#)

Which group does your favourite animal belong to?

My favourite animal is a guinea pig.

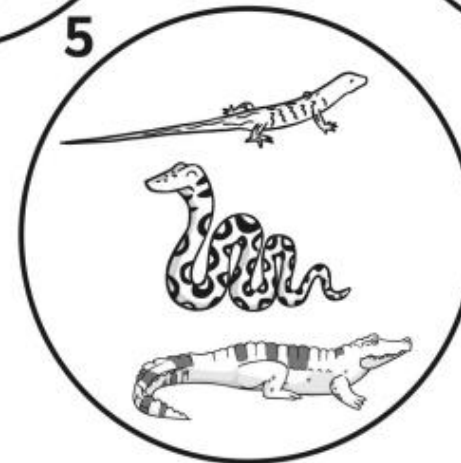
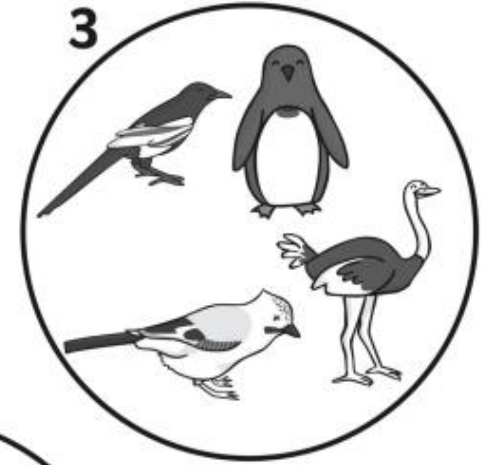
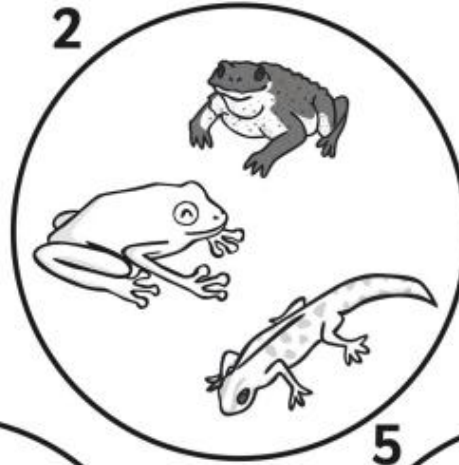
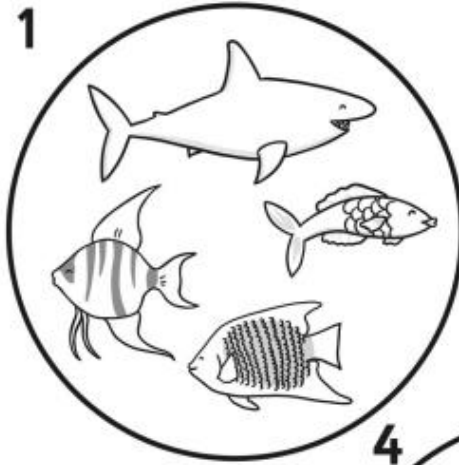
Guinea pigs are a mammal. It has fur and four legs, lives on land, it has lungs, the babies grow in the mum's tummy and it is warm blooded.

Many thanks, Mrs Kite

(See the worksheet below)

Now can you do this activity?

There are many different types of animals. Some look similar and some look very different. One way we group animals is by their common features e.g. feathers and scales on their legs.



Name the animal group and write what the animals in each group have in common.

Group 1

Group 2

Group 3

Group 4

Group 5
